

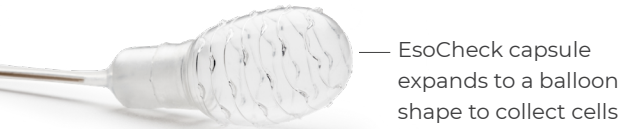
How it works

You swallow the EsoCheck capsule, which is briefly inflated to swab the lining of your lower esophagus to collect cells — targeting the area where abnormal cells are found — then deflated to protect the collected cells as the device is gently pulled back and removed from your mouth.

The collected esophageal cells are then sent to a lab to undergo diagnostic testing.



EsoCheck capsule



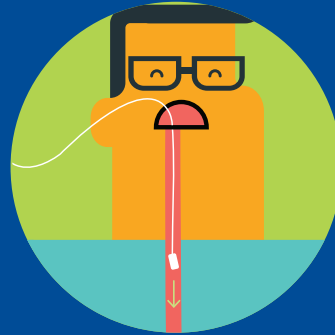
EsoCheck capsule expands to a balloon shape to collect cells



In clinical testing, most patients found the EsoCheck capsule easy to swallow and would recommend the procedure to others.¹

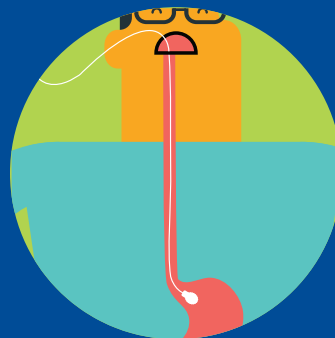
What to expect

Before beginning, your doctor will confirm you have not eaten any solid foods within the last 2 hours.



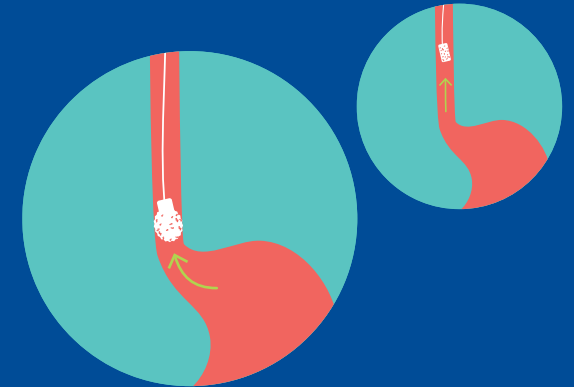
1 Swallow

Your doctor will place the EsoCheck capsule at the back of your mouth to be swallowed. Sips of water can help advance the capsule more easily as the muscles of your esophagus move the capsule to your stomach.



2 Inflate

Your doctor will inflate the balloon to expose textured ridges for cell collection.



3 Collect+Protect™

The inflated balloon will be gently pulled back to collect cells in the target area and then deflated — this protects the sampled cells as the capsule is pulled back through the remaining portion of your esophagus and mouth.



4 Lab Test

The balloon portion of the capsule, covered with esophageal cells, is removed from the catheter and placed in a preservative solution to be sent to the lab for analysis.

Checking for abnormalities in your esophagus takes just five-minutes in your doctor's office.

5
minutes



EsoCheck capsule

Daily vitamin

Gelcap



EsoCheck with Collect+Protect™ Technology is a vitamin pill-sized capsule containing a small inflatable balloon attached to a thin catheter.

INDICATIONS FOR USE: The EsoCheck Cell Collection Device is indicated for use in the collection and retrieval of surface cells of the esophagus in the general population of adults, 22 years of age and older.

CAUTION: Federal law restricts this device to sale by or on the order of a physician.



A convenient
five-minute procedure
to collect cells from
your esophagus



REFERENCES:

1. Science Translational Medicine. 17 Jan 2018; Vol. 10, Issue 424, eaao5848, DOI: 10.1126/scitranslmed.aao5848

EsoCheck and Collect + Protect Technology are trademarks of Lucid Diagnostics. © Lucid Diagnostics 2021.

AD-0262 Rev A

→ LucidDx.com

Your doctor needs to collect cells from your lower esophagus for testing — here's what you can expect.

EsoCheck[®]
cell collection device